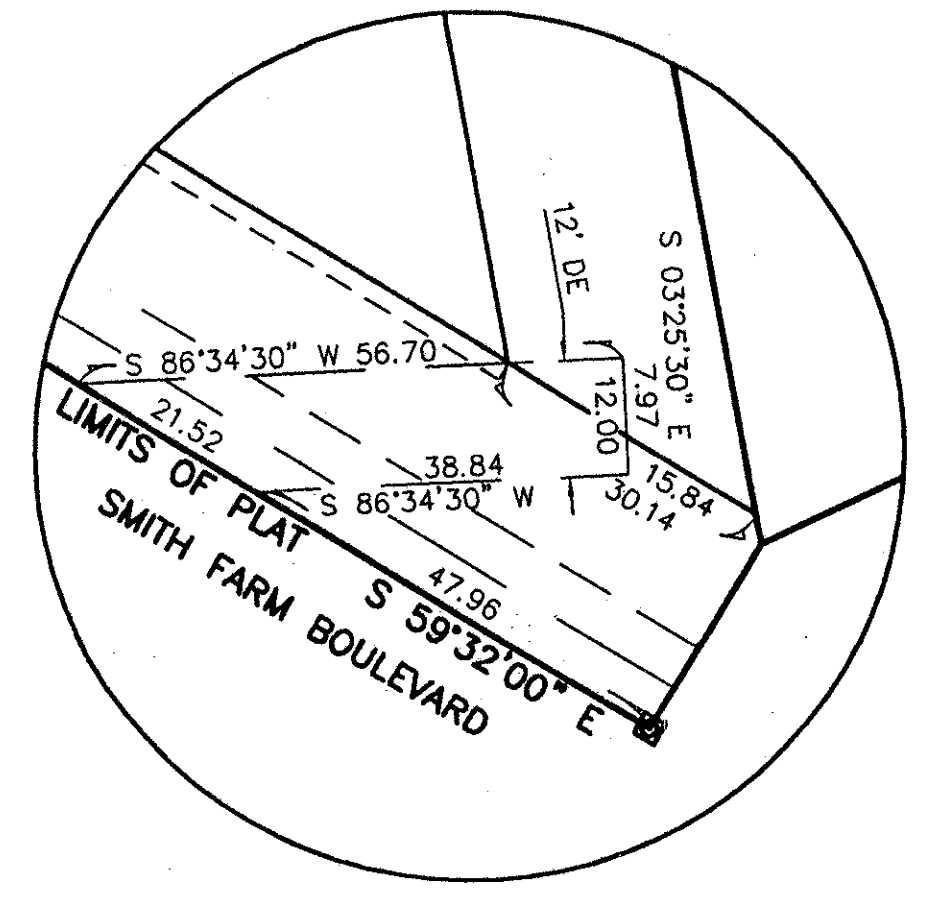
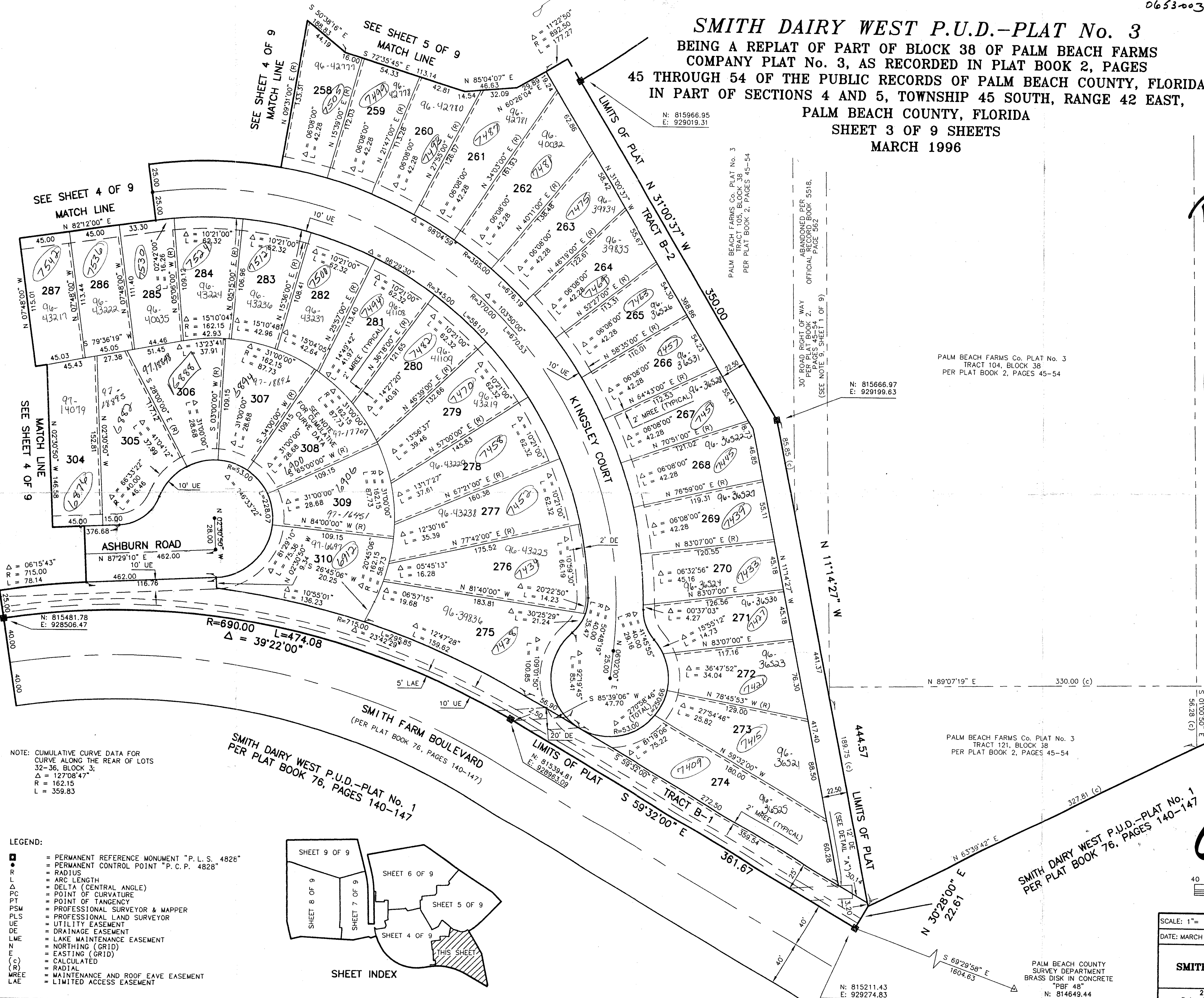


SMITH DAIRY WEST P.U.D.-PLAT No. 3
 BEING A REPLAT OF PART OF BLOCK 38 OF PALM BEACH FARMS
 COMPANY PLAT No. 3, AS RECORDED IN PLAT BOOK 2, PAGES
 45 THROUGH 54 OF THE PUBLIC RECORDS OF PALM BEACH COUNTY, FLORIDA
 IN PART OF SECTIONS 4 AND 5, TOWNSHIP 45 SOUTH, RANGE 42 EAST,
 PALM BEACH COUNTY, FLORIDA
 SHEET 3 OF 9 SHEETS
 MARCH 1996

*PET. 94-77
 ALDRE #0001
 5/2/2/2*

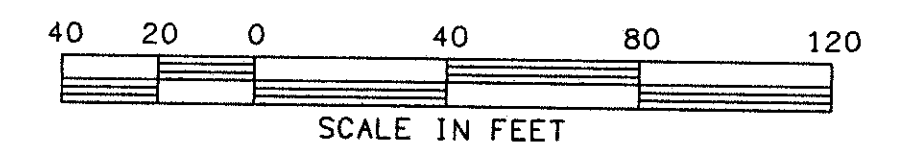
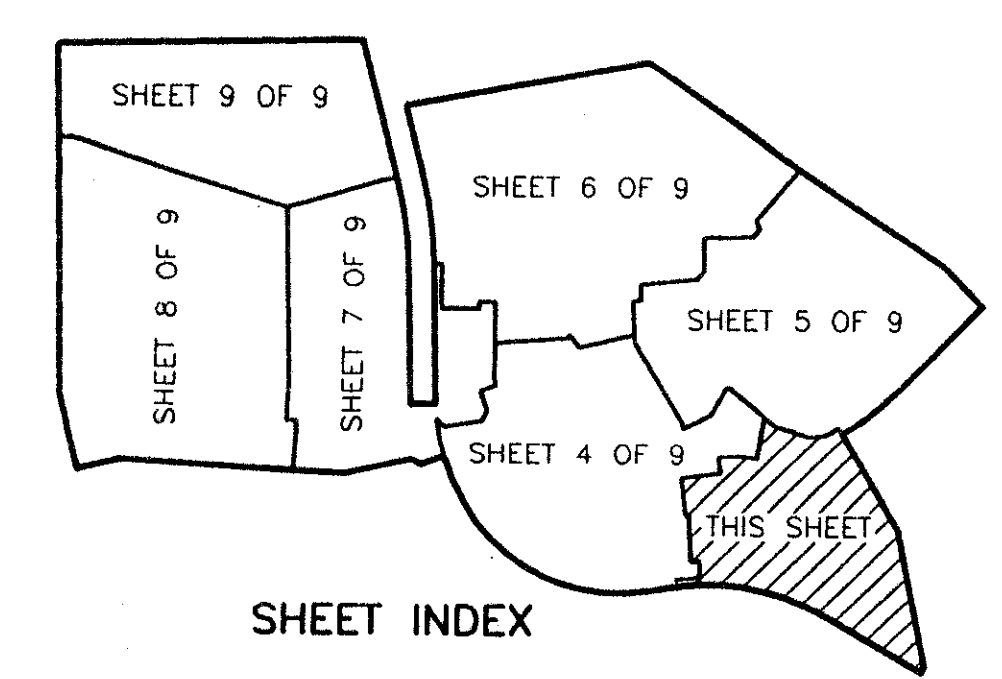


DETAIL "A"



NOTE: CUMULATIVE CURVE DATA FOR CURVE ALONG THE REAR OF LOTS 32-36, BLOCK 3;
 $\Delta = 127^{\circ}08'47''$
 $R = 162.15$
 $L = 359.83$

- LEGEND:
- = PERMANENT REFERENCE MONUMENT "P. L. S. 4826"
 - = PERMANENT CONTROL POINT "P. C. P. 4828"
 - R = RADIUS
 - L = ARC LENGTH
 - Δ = DELTA (CENTRAL ANGLE)
 - PC = POINT OF CURVATURE
 - PT = POINT OF TANGENCY
 - PSM = PROFESSIONAL SURVEYOR & MAPPER
 - PLS = PROFESSIONAL LAND SURVEYOR
 - UE = UTILITY EASEMENT
 - DE = DRAINAGE EASEMENT
 - LME = LAKE MAINTENANCE EASEMENT
 - N = NORTHING (GRID)
 - E = EASTING (GRID)
 - (C) = CALCULATED
 - (R) = RADIAL
 - MREE = MAINTENANCE AND ROOF EAVE EASEMENT
 - LAE = LIMITED ACCESS EASEMENT



SCALE: 1" = 40'
 DATE: MARCH 1996
NICK MILLER, INC.
 Surveying
 Planning & Development
 Consultants
 DRAWN BY:
 CHK:
SMITH DAIRY WEST P.U.D.-PLAT No. 3
 2560 RCA Blvd. • Suite 105
 Palm Beach Gardens, Florida 33410
 DRAWING NUMBER
 9401AAF

SUBMISSION * SMITH DAIRY
 BOOK 77
 FLOOD ZONE B
 QUAD # 49
 SE 94-77
 PUD NAME SMITH DAIRY WEST
 ZIP CODE 33447

*PET. 94-77
 SMITH DAIRY WEST PUD
 PDS B+C
 PDS D (TRACT A THIS
 PLAT) TO BE REPLATED*

0653-003

PALM BEACH COUNTY
 SURVEY DEPARTMENT
 BRASS DISK IN CONCRETE
 "P.B.F. 48"
 N: 814649.44
 E: 930777.88

N: 815211.43
 E: 929274.83

PALM BEACH FARMS Co. PLAT No. 3
 TRACT 104, BLOCK 38
 PER PLAT BOOK 2, PAGES 45-54

PALM BEACH FARMS Co. PLAT No. 3
 TRACT 105, BLOCK 38
 PER PLAT BOOK 2, PAGES 45-54

30' ROAD RIGHT OF WAY
 PER PLAT BOOK 2, PAGES 45-54
 (SEE NOTE 9, SHEET 1 OF 9)

N: 815666.97
 E: 929199.63